

1. **Direction:** In this question, two **columns I and II** and three sentences are given, which are divided into two parts. **Column I (A, B and C)** consists of first half of each sentence and **Column II (D, E and F)** consists of second half of each sentence. Match column I with column II, so that the sentences formed are both meaningful and grammatically correct. Choose the option as your answer.
- I. A) Most farmers depend on
B) It is important to plan recruitments in advance
C) As the city has experienced a continuous downpour
- II. D) for the past two days, the condition of the roads has deteriorated.
E) a rather than waiting until a vacancy occurs.
F) urban markets to secure their livelihoods
- A. B-E and C-F
B. A-E, B-F and C-D
C. A-F and C-D
D. B-F
E. A-E and C-F
2. **Direction:** In this question, two **columns I and II** and three sentences are given, which are divided into two parts. **Column I (A, B and C)** consists of first half of each sentence and **Column II (D, E and F)** consists of second half of each sentence. Match column I with column II, so that the sentences formed are both meaningful and grammatically correct. Choose the option as your answer.
- I. A) What you see typically in a workplace is that
B) You may be well equipped to go for an excursion
C) More often than not it is the PR that is responsible
- II. D) but that doesn't safeguard from all possible hurdles in your journey.
E) only a fewer people shoulder most responsibilities.
F) for the image and valued of a celebrity
- A. B-D
B. A-E and C-F
C. CE
D. A-E, B-F and C-D
E. C- D and A- F

3. **Direction:** In this question, two **columns I and II** and three sentences are given, which are divided into two parts. **Column I (A, B and C)** consists of first half of each sentence and **Column II (D, E and F)** consists of second half of each sentence. Match column I with column II, so that the sentences formed are both meaningful and grammatically correct. Choose the option as your answer.
- I. A) Determining and planning your staff needs
B) The study documents the impacts of corruption
C) Acquiring quality certificates and patents is
- II. D) is crucial for run the department effectively.
E) a must for business in order for them to safeguard their products.
F) for both smaller and larger sized firms.
- A. B-F and C-E
B. A-D and C-D
C. C-D and A-F
D. C-E
E. B- D
4. **Direction:** In this question, two **columns I and II** and three sentences are given, which are divided into two parts. **Column I (A, B and C)** consists of first half of each sentence and **Column II (D, E and F)** consists of second half of each sentence. Match column I with column II, so that the sentences formed are both meaningful and grammatically correct. Choose the option as your answer.
- I. A) A skilled supervisor is an effective communicator
B) The fundamental right to asylum for
C) They had long suspected the existence of a neutral atomic
- II. D) particles, the neutron, which James Chadwick found in 1932.
E) problem- solving and employee motivating
F) for the politically persecuted knows no upper limit.
- A. A-E and B-D
B. A-F, A-E and B- D
C. B-F
D. C- D
E. C-D and B-F
5. **Direction:** The given sentences, when properly sequenced, form a coherent paragraph. Each sentence is labelled with a letter. Choose the most logical order of the sentences from among the five given choices to construct a coherent paragraph keeping 1 as the first statement

1. Worthless currency is not necessarily useless.

A. It can be a pointed way of shaming someone who asks for a bribe.

B. The members of the 5th pillar, the group which founded the anti-bribery campaign that launched the notes, calls them a non-violent weapon of non-co-operation.

C. They look roughly like 50 rupee notes and people are encouraged to hand them to corrupt officials, signalling resistance to sleaze.

D. That is the thinking behind zero rupee notes, an anti-corruption Indian gimmick now attracting worldwide interest.

A. BDAC

B. ADCB

C. CDAB

D. DABC

E. ACDB

6. **Direction:** The given sentences, when properly sequenced, form a coherent paragraph. Each sentence is labelled with a letter. Choose the most logical order of the sentences from among the five given choices to construct a coherent paragraph keeping 1 as the first statement

1. Besides the loss of life, infrastructure destruction is by far the most obvious type of damage that comes to mind when we think about natural disasters.

A. Reuters reported that after a series of earthquakes hit Japan, factories for manufacturers like Sony, Honda, and Toyota were closed.

B. Thus, one of the biggest problems for areas affected by natural disasters is business disruption.

C. In today's increasingly interconnected economy, the economic fallout from a natural disaster is rarely relegated to the geographic area that it hits; in fact, even natural disasters that take place thousands of miles away can shake up your portfolio here at home.

D. With road, communication infrastructure, and building damage common after sizable disasters, it's not uncommon for local businesses to be shut down for some time after the aftershocks settle.

A. ABDC

B. BDAC

C. ACDB

D. DBAC

E. BACD

7. **Direction:** The given sentences, when properly sequenced, form a coherent paragraph. Each sentence is labelled with a letter. Choose the most logical order of the sentences from among the five given choices to construct a coherent paragraph keeping 1 as the first statement

1. One of the traditional arguments for a free market economy is that it provides businesses with a tangible incentive to offer goods and services that people want.

A. Such a system, they say, necessarily creates clear winners and loser

B. That is, firms that successfully respond to the needs of the consumer get rewarded with higher profits.

C. This is because the means of production are in private hands and those who own them not only accumulate a disproportionate share of wealth but have the power to suppress the rights of those they employ.

D. Nevertheless, some economists and political philosophers have contended that the capitalist model is inherently flawed.

A. BDAC

B. BCAD

C. DCAB

D. DBCA

E. BCDA

8. **Direction:** The given sentences, when properly sequenced, form a coherent paragraph. Each sentence is labelled with a letter. Choose the most logical order of the sentences from among the five given choices to construct a coherent paragraph keeping 1 as the first statement

1. Science merely reflects the social forces by which it is surrounded and hence it is war and not science which is considered as the enemy of mankind.

A. Our main problem, therefore, is not to curb science, but to stop war, to substitute law for force and international governments for anarchy in the relations between nations.

B. It is found that there is peace, science is constructive; when there is war science is perverted to destructive ends.

C. Until now, they have brought us to the doorstep of doom.

D. The weapon which science gives us do not necessarily create war, these make war increasingly more terrible.

A. ADBC

B. BADC

C. CDAB

D. DABC

E. BDCA

9. **Direction:** The given sentences, when properly sequenced, form a coherent paragraph. Each sentence is labelled with a letter. Choose the most logical order of the sentences from among the five given choices to construct a coherent paragraph keeping 1 as the first statement

1. In the long run, national recognition of same-gender marriage is inevitable.

A. It is only a matter of time before all state laws reflect that view.

B. Prudence counsels that marriage equality should be allowed to continue gaining support in the states and that a federal resolution should be left for another day.

C. Same-gender marriage rights, at first imposed by courts, have now been recognized by state legislatures and prevailed in all four states where they were on the ballot in last year's election.

D. Young people overwhelmingly support it, and public opinion has shifted on this issue faster than on almost any other social issue in history.

A. CDAB

B. ACBD

C. BACD

D. DCBA

E. CDBA

10. **Direction:** The given sentences, when properly sequenced, form a coherent paragraph. Each sentence is labelled with a letter. Choose the most logical order of the sentences from among the five given choices to construct a coherent paragraph keeping 1 as the first statement

1. The Ganges is a trans-boundary river of Asia which flows through the actions of India and Bangladesh.

A. It is the third largest river in the world by discharge, draining a large and a fertile basin with an area of about one million square kilometers.

B. The 2,525 km (1,569 mi) river rises in the eastern Himalayas in the Indian state of Uttarakhand and flows south and east through the Gangetic Plain of North India into Bangladesh, where it empties into the Bay of Bengal.

C. The Ganges is the most sacred river to Hindus Ganga along with being a symbol of divinity, spirituality, purity, and moksha.

D. It is also a lifeline to millions of Indians who live along its course and depend on it for their daily needs.

A. BCAD

B. BACD

C. ABCD

D. ABDC

E. CBAD

11. **Direction:** In the given question, there are two statements which can be combined into a single statement in a number of ways without changing their meaning. Below them, three probable starters A, B, C are given, which may combine these sentences. One, two or three of them may be correct. Decide upon which is/are correct, if any mark the option which denotes your answer. If none of the three options is suitable, mark 'None' as your answer.

Discuss the matter objectively with other people who are well-informed. If it is proved that you are about to take a step in the wrong direction, accept the reality and admit your mistake.

I. As soon as they take it into consideration

II. Before taking a decision

III. Yet another example is that

A. Only I

B. Only II

C. Both II and III

D. Both I and II

E. None

12. **Direction:** In the given question, there are two statements which can be combined into a single statement in a number of ways without changing their meaning. Below them, three probable starters A, B, C are given, which may combine these sentences. One, two or three of them may be correct. Decide upon which is/are correct, if any mark the option which denotes your answer. If none of the three options is suitable, mark 'None' as your answer.

A wealth of evidence has accumulated to suggest that a lack of sleep is bad for mind and body. Working memory is important for keeping things in mind for briefer periods of time, which thereby facilitates reasoning and planning.

I. Over the last few years

II. As soon as

III. In contrast

A. Only I

B. Only II

C. Only III

D. Both I and II

E. None

13. **Direction:** In the given question, there are two statements which can be combined into a single statement in a number of ways without changing their meaning. Below them, three probable starters A, B, C are given, which may combine these sentences. One, two or three of them may be correct. Decide upon which is/are correct, if any mark the option which denotes your answer. If none of the three options is suitable, mark 'None' as your answer.

1. The regulator also spoke of two on-going investigations in the matter of NSE and Rs5,548 -crore National Spot Exchange Ltd (NSEL) scam. This was a departure from the regular practice and norms of SEBI.

I. The two ongoing investigations

II. In a departure from

III. Speaking of

A. Only I

B. Only II

C. Only III

D. Both I and III

E. None

14. **Direction:** In the given question, there are two statements which can be combined into a single statement in a number of ways without changing their meaning. Below them, three probable starters A, B, C are given, which may combine these sentences. One, two or three of them may be correct. Decide upon which is/are correct, if any mark the option which denotes your answer. If none of the three options is suitable, mark 'None' as your answer.

Even if the violations are technically against the rules. It can actually serve to strengthen the classroom culture and increase trust with some students.

I. Ignoring certain minor misbehaviours,

II. Going with undisruptive behaviour,

III. Considering which behaviour of children to address and which to ignore,

A. Only I

B. Both I and II

C. Both I and III

D. Both II and III

E. None

15. **Direction:** In the given question, a part of the sentence is printed in bold. Below the sentence alternatives to the bold part are given at (A), (B), (C) and (D) which may help improve the sentence. Choose the correct alternative. In case the given sentence is correct, your answer is (E) i.e. No correction required.

While welcoming all moves **to addresses India's core** concerns on terror, New Delhi must ensure it doesn't get ensnared or triangulated in the equation between Washington and Islamabad.

A. for address India's core

B. to address India's cores

C. to address India's core

D. to address Indian core

E. No correction required

16. **Direction:** In the given question, a part of the sentence is printed in bold. Below the sentence alternatives to the bold part are given at (A), (B), (C) and (D) which may help improve the sentence. Choose the correct alternative. In case the given sentence is correct, your answer is (E) i.e. No correction required.

Massive protests by the Indian Medical Association and poor execution derailed the Chhattisgarh experiment, but the **ideas wasn't without merit**.

A. idea wasn't without merit

B. idea weren't without merit

C. idea hadn't without merit

D. idea haven't without merit

E. No correction required

17. **Direction:** In the given question, a part of the sentence is printed in bold. Below the sentence alternatives to the bold part are given at (A), (B), (C) and (D) which may help improve the sentence. Choose the correct alternative. In case the given sentence is correct, your answer is (E) i.e. No correction required.

The empire-builders benefited from impeccable timing: the characteristic warm, wet and stable weather was conducive to economic **productivity at an agrarian** society.

A. productivity at an agrarian

B. productivity in an agrarian

C. productivity at the agrarian society

D. productive at an agrarian

E. No correction required

18. **Direction:** In the given question, a part of the sentence is printed in bold. Below the sentence alternatives to the bold part are given at (A), (B), (C) and (D) which may help improve the sentence. Choose the correct alternative. In case the given sentence is correct, your answer is (E) i.e. No correction required.

An Australian man, long thought **to being associated of the** digital currency Bitcoin, has publicly identified himself as its creator.

- A. to be associate with that
- B. to be associates from the
- C. to be associate within the
- D. to be associated with the
- E. No correction required

19. **Direction:** In the given question, a part of the sentence is printed in bold. Below the sentence alternatives to the bold part are given at (A), (B), (C) and (D) which may help improve the sentence. Choose the correct alternative. In case the given sentence is correct, your answer is (E) i.e. No correction required.

What drove its initial development was its purely digital existence, **away from the control of** government regulators.

- A. away to the control of
- B. away with control of the
- C. away from control of the
- D. away with the control for
- E. No correction required

20. **Direction:** In the given question, a part of the sentence is printed in bold. Below the sentence alternatives to the bold part are given at (A), (B), (C) and (D) which may help improve the sentence. Choose the correct alternative. In case the given sentence is correct, your answer is (E) i.e. No correction required.

Bitcoin **could let transacting party remain** anonymous, keep transactions very secure, and eliminate middlemen fees.

- A. would letting transactions parties remains
- B. should lets transacting party remain
- C. would let transacting parties remain
- D. would have transacting parties remain
- E. No correction required

21. **Direction:** In the given question, a part of the sentence is printed in bold. Below the sentence alternatives to the bold part are given at (A), (B), (C) and (D) which may help improve the sentence. Choose the correct alternative. In case the given sentence is correct, your answer is (E) i.e. No correction required.

The mid-day meal scheme has helped but **should it have been linked less** with the schooling system and more with the hunger pattern.

- A. should had been linked less
- B. should it not have been linked less
- C. it should been linked lesser
- D. it should have been linked less
- E. No correction required

22. **Direction:** In the given question, a part of the sentence is printed in bold. Below the sentence alternatives to the bold part are given at (A), (B), (C) and (D) which may help improve the sentence. Choose the correct alternative. In case the given sentence is correct, your answer is (E) i.e. No correction required.

A true leader's life is a saga **of dedicating to** the cause of welfare of human beings

- A. of dedicated
- B. of having dedication in
- C. of dedication to
- D. for dedication at
- E. No correction required

23. **Direction:** In the given question, a part of the sentence is printed in bold. Below the sentence alternatives to the bold part are given at (A), (B), (C) and (D) which may help improve the sentence. Choose the correct alternative. In case the given sentence is correct, your answer is (E) i.e. No correction required.

The building had been under construction for a long time until a series of unprecedented events **led it to a halt.**

- A. leads it to a halt
- B. bringing it to a stop
- C. brought it to a halt
- D. led it to a stop
- E. No correction required

24. **Direction:** In the given question, a part of the sentence is printed in bold. Below the sentence alternatives to the bold part are given at (A), (B), (C) and (D) which may help improve the sentence. Choose the correct alternative. In case the given sentence is correct, your answer is (E) i.e. No correction required.

At work, if you are unable to follow the rules, you will find yourself **running out of disagreement** with many people.

- A. running in disagreements
- B. running out of disagreements
- C. running into disagreements
- D. running within disagreement
- E. No correction required

Direction (25-30): Read the given passage carefully and answer the questions that follow. Certain words are printed in bold to help you locate them while answering some of these.

According to the diaper maker Unicharm, in Japan, adult diapers now outsell baby diapers. That's because a quarter of the country's population is 65 or older. By 2060, that proportion will hit 40 percent.

What adjustments have to be made when so many people grow old simultaneously? To take one example, after a recent surge in accidents involving older drivers, the government began testing the Robot Shuttle, an autonomous bus intended for use in rural areas, where Japan's shrinking pains have **hurt** the most. Other tweaks include slowing down escalators and equipping shopping carts with magnifying glasses.

It's long been observed that Japan's aging doesn't bode well for its economy. Lots of old people means a financial **drain** on both the private and public sectors, as health-care and pension costs skyrocket and productivity declines. But the news isn't all bad: Amid this elder boom, a new, 100 trillion yen (\$800 billion) consumer category has emerged, known as "the silver market."

Millions of Japanese seniors who have long been saving for retirement find themselves at the center of a commercial bonanza. The products vying for their attention range from Docomo's Raku-Raku 4, a smartphone that's "easier to hear" and also has jumbo screen icons, to Fujisoft's Palro, a \$6,000 "carebot" that combats dementia through trivia games and fitness drills. Even video-game arcades, long a bastion of youth, are wooing golden-agers with benches for resting; arcade staffers are encouraged to get certified as senior-friendly "service assistants."

Source: <https://www.theatlantic.com/magazine/archive/2018/01/choke-proof-food/546572/>

25. What is the passage about?

A. How Japan is handling its aging population, the percentage of which is quite high as compared to those of the young.

B. Japan's economy is regressing badly as the maximum population is old and cannot contribute to the growth of the economy.

C. Japan is a techno- friendly economy and the old people have not failed to embrace technology.

D. Japan sells more diapers for the old than for babies.

E. Japan has progressed so much in terms of technology that it is giving a huge challenge to the developed countries like the U. S. and the U.K.

26. Which of the following can be inferred from the passage?

1) The government of Japan is mindful towards its aging population.

2) Japan's aging population, rather than being harmful to the economy, has led to positive developments in the economy.

3) The capital invested in the old population in Japan is more or less a waste as it can well be used to procure the future of the young generation.

A. Only 2

B. Only 3

C. Both 2 and 3

D. Both 1 and 2

E. Both 1 and 3

27. What does the author mean when he/ she says, "It's long been observed that Japan's aging doesn't bode well for its economy."

A. The old people are revered in Japan.

B. The increasing number of old people in Japan have people a burden on their families and the society.

C. People growing old is a recent phenomenon in Japan, unlike in the past when the youth superseded the number of the old.

D. The old people of Japan have been able to prove beneficial for the economy, as in given their old age their contribution to the economy has been less.

E. None of these.

28. Which of the following statement is true with respect to the passage?

A. By 2060, Japan's population of increase by 15% of what it presently is.

B. The health- care and pension costs provided to the old people in Japan are quite expensive and in the face of the zero-contribution made by the old population, these investments burden the economy.

C. The rural areas have been the most adversely affected owing to a large number of older population.

D. Japan has developed certain new equipment's and gadgets, exclusively designed for the old people, thus leading to the flourishing to a new market altogether.
E. All of these.

29. Which of the following words is similar in meaning to "hurt" as used in the passage.
A. Harm B. Cut
C. Burn D. Suffer
E. Procured
30. Which of the following words is opposite in meaning to "drain" as used in the passage.
A. Downflow B. Absorption
C. Effective D. Radiation
E. Discharge

Direction (31-35): Study the following information carefully to answer the given questions.

A word and number arrangement machine when given an input line of words and numbers rearranges them following a particular rule. The following is an illustration of input and rearrangement.

Input : 30 69 20 96 50 56 76 19
Step I : 20 30 69 96 50 56 76 21
Step II : 31 20 69 96 56 76 21 51
Step III : 57 31 20 96 76 21 51 70
Step IV : 77 57 31 20 21 51 70 97
and Step IV is the last step of the rearrangement the above input.

As per the rules followed in the above steps, find out in each of the following questions the appropriate steps for the given input given below:

Input: 50 17 85 34 88 55 11 92 10 78

31. How many steps will be needed to complete the arrangement?
A. Five B. Six
C. Four D. Seven
E. None of these
32. Which of the following would be Step IV?
A. 79 50 18 11 88 92 12 35 56 86
B. 79 51 18 10 88 92 12 35 56 86
C. 79 51 18 11 88 92 12 35 56 86
D. 79 51 18 11 87 92 12 35 56 86
E. None of these
33. In Step V, which of the following number would be at 6th position from the right?
A. 88 B. 92
C. 11 D. 12
E. 17

34. Which of the following would be the final arrangement?
A. 89 79 51 18 11 12 35 55 86 93
B. 89 79 51 18 11 12 35 56 86 93
C. 89 79 51 18 11 12 34 56 86 93
D. 89 79 51 18 10 12 35 56 86 93
E. None of these

35. What will be the position of '92' in step IV?
A. Fifth from the left
B. Eight from the left
C. Fifth from the right
D. Sixth from the right
E. None of these

Direction (36-40): Study the following information carefully to answer the questions.

In a certain code language,
'business is easy to do' is written as 'pa ro se yo ze',
'business arise difficulty in life' is written as 'lo fe pa so te',
'life is easy' is written as 'so ro yo',
'difficulty to do work' is written as 'se lo ze me' and
'easy business life' is written as 'pa yo so'.

36. What may be the possible code for 'difficulty arise in business'?
A. lo, te, fe, pa B. lo, te, so, pa
C. lo, so, pa, yo D. te, lo, me, so
E. lo, fe, pa, ro
37. What may be the possible code for 'life is complicated' in the given code language?
A. so ro fe B. so pa ro
C. ze pa ro D. so fa ro
E. None of these
38. What is the code for 'arise' in the given code language?
A. fe B. te
C. lo D. pa
E. Either 'fe' or 'te'
39. What is the code for 'difficulty' in the given code language?
A. pa B. lo
C. so D. te
E. yo
40. What is the code for 'do' in the given code language?
A. se B. ze
C. ro D. pa
E. Either 'se' or 'ze'

Direction (41-42): Study the given question carefully and answer the given question.

C is the daughter of the one who is son of B. There is only one married couple in the group. F is the brother of E, who is the daughter of D and grand daughter of B. A is the mother of C, who is married couple in the group.

41. What is true with respect to F?
A. F is the son of B and A
B. F is the daughter of C and E
C. F is the son of D and A
D. F is daughter of B
E. None of these
42. How is B related to E?
A. B is uncle of E
B. B is grandfather of E
C. B is Grandmother of E
D. B is brother of E
E. Can't be determined

Direction (43-47): Study the following information to answer the given questions.

Fourteen people are sitting in two parallel rows containing seven people each, in such a way that there is an equal distance between adjacent persons.

In row 1, P, Q, R, S, T, U and V are seated and all of them are facing south. In row 2, A, B, C, D, E, F and G are seated and all of them are facing north. Therefore, in the given seating arrangement each member seated in a row faces another member of the other row. U sits opposite to G and are in middle of the rows. A sits fourth to right of D. Neither A nor D sits at extreme ends. T faces D. V does not face A and V does not sit at any of the extreme ends. V is not an immediate neighbour of T. B sits at one of the extreme ends. Only three people sit between B and E. E does not face V. Three persons sit between R and Q. R is not an immediate neighbour of T. C does not face V. P is not an immediate neighbour of R.

43. Who amongst the following sit at extreme left ends of the parallel rows?
A. R, B
B. F, T
C. P, C
D. B, F
E. None of these
44. Who amongst the following faces A?
A. R
B. T
C. P
D. Q
E. S

45. How many persons are seated between T and S?
A. One
B. Two
C. Three
D. Four
E. None of these
46. P is related to V in the same way as C is related to F. Which of the following is E related to, following the same pattern?
A. B
B. D
C. C
D. A
E. None of the above
47. Which of the following is true regarding F?
A. F sits second to right of C.
B. F is not an immediate neighbour of A
C. F sits third to left of D
D. F sits at one of the extreme ends of the line
E. F faces V

Direction (48-52): Study the given information carefully and answer the following question.

A, B, C, D, E, F and G are seven different boxes packed with different numbers written on top of them viz. 1, 2, 3, 4, 5, 6 and 7 but not necessarily in the same order. Box D is immediately above the box packed with number 5. More than three boxes are there between box packed with number 4 and box packed with number 2. There are two boxes between the box B and box E. There is only one box between box E and box G. There are three boxes between box G and box A, which is packed with number 1. There are only two boxes between box A and box C, which is packed with number 6. The box packed with number 2 is immediately above the box G. More than three boxes are there between box packed with number 5 and box packed with number 4. Box E is packed with number 3.

48. Which of the following box is packed with a number which is a perfect square?
A. D
B. B
C. F
D. G
E. Cannot be determined
49. How many boxes are there between box A and box which is packed with number 5?
A. None
B. One
C. Two
D. Three
E. Four

50. What is the sum of numbers of box D and box F?
 A. Five B. Six
 C. Seven D. Eight
 E. Nine
51. Which of the following box is packed with even number?
 A. A B. G
 C. D D. E
 E. F
52. Which box is packed with number 7?
 A. D B. F
 C. B D. G
 E. C

Direction (53-57): Study the given information carefully and answer the following question.

There are eight friends in a group M, N, O, P, Q, R, S and T. They have their birthdays in one of the following months - March, June, November and December. In each month there are two birthdays. The birthdays are either on 16th or 25th of any given month. O and Q have birthdays in month having 31 days. There are at least two birthdays between M and T. M does not have birthday in March. N has birthday in November. T's birthday is immediately after N's. Q's birthday is not on 16th of any month. N's birthday is somewhere after O's. There are two birthdays between O and P. N and Q have birthday on same date. Similarly, M and S have birthdays on same date. P and T do not have birthdays on same date. R does not like December month.

53. Who among the following has birthday on 25th of June?
 A. O B. P
 C. R D. S
 E. T
54. How many persons have birthday between O and T?
 A. One B. Two
 C. Three D. Four
 E. Five
55. M has birthday on which date?
 A. 25th November
 B. 16th December
 C. 25th June
 D. 16th November
 E. None of these

56. Four of the following are alike in a certain way and form a group. Which of the following does not belong to that group?
 A. O B. Q
 C. P D. R
 E. T

57. Who among the following have birthday in June?
 A. R B. S
 C. T D. M
 E. N

Direction (58-60): Study the following information and answer the questions given below.

8 persons M, N, O, P, Q, R, S and T are standing in such a way that O is 10 m in west from N, N is 20 m South with respect to M. M is 30 m towards West with respect to Q. P is 40 m towards South with respect to Q. R is 5 m apart from S towards North. T is 20 m towards East with respect to S. R is 30 m towards West with respect to P.

58. In which direction is Q standing with respect to R?
 A. North-West
 B. North
 C. North-East
 D. Cannot be determined
 E. None of these
59. If one more person U is standing towards South-West with respect to P, then in which direction is T, standing with respect to U?
 A. South-West
 B. North-East
 C. North-West
 D. Cannot be determined
 E. None of these
60. What is the direction of O with respect to S?
 A. North-West
 B. North
 C. West
 D. Cannot be determined
 E. None of these

61. **Direction:** The following question is followed by two statements named I and II. You have to decide, if these statements are sufficient to answer the asked questions and mark the correct option.

Who among P, Q, R, S and T each one having different weight is the third heaviest?

I. Q is heavier than R and S. T is heavier only than P.

II. Only three are lighter than R. The weight of Q is 50kg which is 2kg more than R. S is heavier only than P and T.

A. If the data in statement I alone are sufficient to answer the question, while the data in statement II alone are not sufficient to answer the question.

B. If the data in statement II alone are sufficient to answer the question, while the data in statement I alone are not sufficient to answer the question.

C. If the data either in statement I alone or in statement II alone are sufficient to answer the question.

D. If the data even in both statements I and II together are not sufficient to answer the question.

E. If the data in both statement I and II together are necessary to answer the question.

62. **Direction:** The following question is followed by two statements named I and II. You have to decide, if these statements are sufficient to answer the asked questions and mark the correct option.

On which day of the week did Anu arrive?

I. Her sister Tanu correctly remembers that she did not arrive on Wednesday.

II. Her mother correctly mentions that she arrived before Friday but after Tuesday.

A. If the data in statement I alone are sufficient to answer the question, while the data in statement II alone are not sufficient to answer the question.

B. If the data in statement II alone are sufficient to answer the question, while the data in statement I alone are not sufficient to answer the question.

C. If the data either in statement I alone or in statement II alone are sufficient to answer the question.

D. If the data even in both statements I and II together are not sufficient to answer the question.

E. If the data in both statement I and II together are necessary to answer the question.

63. **Direction:** The following question is followed by two statements named I and II. You have to decide, if these statements are sufficient to answer the asked questions and mark the correct option.

How is Mohan related to Faizan?

I. Faizan is the brother of Neelam who is mother of Rohan.

II. Mohan has two brothers and Rohan is one of them.

A. If the data in statement I alone is sufficient to answer the question, while the data in statement II alone is not sufficient to answer the question

B. If the data in statement II alone is sufficient to answer the question, while the data in statement I alone is not sufficient to answer the question

C. If the data either in statement I alone or in statement II alone is sufficient to answer the question

D. If the data in both statements I and II even together is not sufficient to answer the question

E. If the data in both statements I and II together is necessary to answer the question

64. **Direction:** The following question is followed by two statements named I and II. You have to decide, if these statements are sufficient to answer the asked questions and mark the correct option.

Among Puneet, Karishma, Daya and Ritik, who is son of Manvendra?

I. Puneet and Karishma are sisters of Ritik.

II. Daya is the mother of Karishma and wife of Manvendra.

A. If the data in statement I alone is sufficient to answer the question, while the data in statement II alone is not sufficient to answer the question

B. If the data in statement II alone is sufficient to answer the question, while the data in statement I alone is not sufficient to answer the question

C. If the data either in statement I alone or in statement II alone is sufficient to answer the question

D. If the data in both statements I and II even together is not sufficient to answer the question

E. If the data in both statements I and II together is necessary to answer the question

65. **Direction:** The question below consists of a question and two statements numbered I and II given below it. You have to decide whether the data provided in the statements are sufficient to answer the question.

There are five persons named Suhana, Rashmi, Radha, Ranu and Zoya standing in a row facing South. Who is standing to the immediate left of Radha?

I. Suhana is not standing on any of the extreme end of the row. Zoya is standing to the second left of Rashmi.

II. Zoya is standing in the middle of the row. Suhana is standing at third to the left of Rashmi who is at the extreme right.

A. If the data in statement I alone is sufficient to answer the question, while the data in statement II alone is not sufficient to answer the question

B. If the data in statement II alone is sufficient to answer the question, while the data in statement I alone is not sufficient to answer the question

C. If the data either in statement I alone or in statement II alone is sufficient to answer the question

D. If the data in both statements I and II even together is not sufficient to answer the question

E. If the data in both statements I and II together is necessary to answer the question

66. **Directions:** Find out the wrong no. in the following series?

59, 60, 61, 64, 79, 185, 1129

- A. 185
B. 61
C. 60
D. 1129
E. 79

67. **Directions:** Find out the wrong no. in the following series?

330, 80, 280, 120, 250, 130, 240

- A. 330
B. 130
C. 240
D. 120
E. 250

68. **Directions:** Find out the wrong no. in the following series?

291, 147, 75, 39, 22, 12, 7.5

- A. 39
B. 147
C. 22
D. 7.5
E. 291

69. **Directions:** Find out the wrong no. in the following series?

1, 3, 9, 31, 129, 652

- A. 1
B. 3
C. 652
D. 31
E. 129

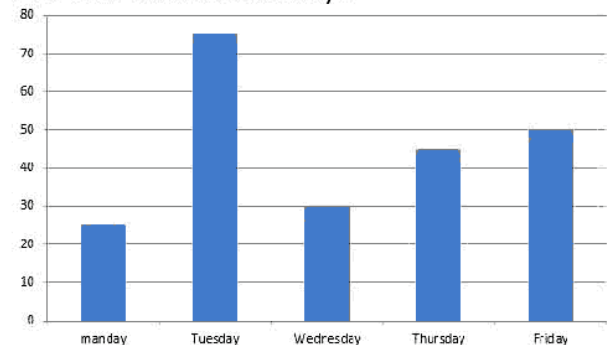
70. **Directions:** Find out the wrong no. in the following series?

26, 27, 34, 58, 106, 186, 306

- A. 27
B. 34
C. 186
D. 106
E. 306

Directions (71-75): Bar graph given below shows pens sold by a retailer on five different days. Study the data carefully and answer the following questions.

Pen sold on different days



71. Out of total pens sold on Tuesday ratio between total defective pens sold to total pens sold is 7: 15. Find total number of non - defective pens sold on Tuesday by retailer?

- A. 40
B. 15
C. 60
D. 45
E. 90

72. Total number of pens sold on Saturday is 40% more than total number of pens sold on Wednesday. Find total number of pens sold on Friday and Saturday together?

- A. 92
B. 122
C. 172
D. 125
E. 105

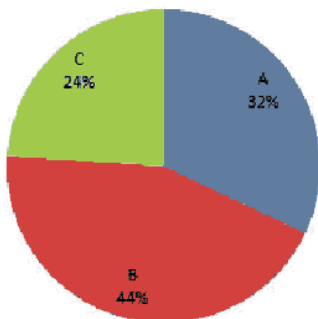
73. Find the difference between total number of pens sold on Monday and Tuesday together to total number of pens sold on Thursday and Friday together?

- A. 25
B. 40
C. 5
D. 22
E. 10

74. Total number of pens sold on Tuesday is 25% more than total number of pens sold on Sunday. Find total of pens sold on Sunday?
A. 72 B. 60
C. 94 D. 43
E. 75
75. Out of the total pens sold on Thursday, 20% are blue ink pen. Out of remaining 25% are red ink pen and remaining are black ink pen. Find total number of blue and black ink pen sold on Thursday?
A. 36 B. 46
C. 56 D. 66
E. 55

Direction (76-80): Pie chart given below shows total number of workers in three different companies. Table given below shows ratio between officers and workers working in these companies. Study the data carefully and answer the following questions

Sales



| Company | Officers: Workers |
|---------|-------------------|
| A | 1: 16 |
| B | 1: 18 |
| C | 1: 12 |

Note: total employees = officers + workers

76. Find the difference between total number of workers in company 'A' and total number of workers in company 'B' and 'C' together?
A. 324 B. 423
C. 523 D. 624
E. 124
77. Total number of employees in company 'B' is how much more than total number of employees in company 'C'.

- A. 184 B. 176
C. 225 D. 265
E. 125
78. Total number of officers in company 'A' is how much less than total number of officers in company 'B'?
A. 1 B. 7
C. 9 D. 4
E. 8
79. Find the ratio between total number of workers in company A and C together to total number of officers in company A and C together?
A. 17: 1 B. 12: 7
C. 14: 1 D. 18: 1
E. 22: 3
80. Total number of officers and workers in company D is 50% and 25% more than total number of officers and workers in company 'C' respectively. Find total number of employees in company 'D'?
A. 297 B. 279
C. 972 D. 927
E. 227
81. If a speed of boat is 500% more than the speed of a current.
Quantity I - 'X': If boat can travel a distance of 63 km 3 hr, in downstream then 'X' is the speed of the boat in upstream (km/hr.)
Quantity II- 15 km/hr
A. Quantity I > Quantity II
B. Quantity I < Quantity II
C. Quantity I ≥ Quantity II
D. Quantity I ≤ Quantity II
E. Quantity I = Quantity II or No relation
82. Sum of 8 Consecutive even number is S_1 .
Quantity I - Sum of second number and eight number in S_1
Quantity II - Sum of third number and sixth number in S_1
A. Quantity I > Quantity II
B. Quantity I < Quantity II
C. Quantity I ≥ Quantity II
D. Quantity I ≤ Quantity II
E. Quantity I = Quantity II or No relation
83. Quantity I. 'X': $X^2 + X - 6 = 0$
Quantity II. 'y': $y^2 + 7y + 12 = 0$
A. Quantity I > Quantity II
B. Quantity I < Quantity II
C. Quantity I ≥ Quantity II
D. Quantity I ≤ Quantity II
E. Quantity I = Quantity II or No relation

84. An article is sold at Rs. 1500 after allowing discount of 12.5% on Marked price.
Quantity I - Rs. 550
Quantity II - Marked price of article.
A. Quantity I > Quantity II
B. Quantity I < Quantity II
C. Quantity I ≥ Quantity II
D. Quantity I ≤ Quantity II
E. Quantity I = Quantity II or No relation
85. A's efficiency is 25% more than B
Quantity I - 'X': A can do 5/6th of total work in 'X' days
Quantity II - 'Y': B can do 4/5th of total work in 'Y' days
A. Quantity I > Quantity II
B. Quantity I < Quantity II
C. Quantity I ≥ Quantity II
D. Quantity I ≤ Quantity II
E. Quantity I = Quantity II or No relation
86. Sum of volume of cylinder (S) and volume of cone (C) is $2190\pi \text{ cm}^3$ & height of both cylinder and cone is same i.e., 10 cm. if radius of cone is 15 cm find the ratio of radius of S to radius of C?
A. 4:5
B. 3:7
C. 3:5
D. 7:5
E. 1:5
87. **Direction:** Find the value of (?) in following approximation questions:
 $? \% \text{ of } 179.99 = \sqrt{(24.02)^2 + (17.98)^2} + 60.01\% \text{ of } 659.98$
A. 20
B. 50
C. 70
D. 30
E. 15
88. **Direction:** Find the value of (?) in following approximation questions:
 $\frac{339.99}{?} = \sqrt{143.99} + \sqrt{64.01}$
A. 19
B. 17
C. 12
D. 23
E. 40
89. **Direction:** Find the value of (?) in following approximation questions:
 $34.02\% \text{ of } 550.09 + ? = 297.07 + \sqrt{728.95}$
A. 147
B. 22
C. 18
D. 37
E. 57
90. **Direction:** Find the value of (?) in following approximation questions:
 $2^? = 32.01 + 128.01 \times 1023.99 + 7.99$
A. 5
B. 1
C. 2
D. 3
E. 4

91. **Direction:** Find the value of (?) in following approximation questions:
 $(? + 9.97) \times 12.8 = 20.12\% \text{ of } 1319.97$
A. 210
B. 220
C. 270
D. 290
E. 205
- Direction (92-96):** There are three persons A, B and C who each invested in two different scheme S₁ and S₂. A invested Rs. 80,000 for 2 yr in scheme S₁ and 30,000 for 4 years in scheme S₂. B invested Rs 30,000 for year in S₁ and he did not invest in scheme B. B also obtained a profit of 10,000 by selling his car. C invested Rs 50000 for 5 years in scheme S₁ and 10000 for 3 year in scheme S₂. Total profit obtained from scheme S₁ is 2 lakh and scheme S₂ is 90,000.
92. Profit obtained by A from scheme S₁ is what percent of profit obtained by C from scheme S₂.
A. $326\frac{8}{9}\%$
B. $317\frac{8}{9}\%$
C. $326\frac{8}{9}\%$
D. $335\frac{5}{9}\%$
E. $355\frac{5}{9}\%$
93. If A had invested his sum at Simple interest for 3 yr at the rate of R% p.a. instead in scheme S₁ and B has invested his sum at compound interest at (R + 5%) p.a. for 1 year and difference in interest obtained is 30,000 then find value of R%.
A. 15%
B. 7%
C. 5%
D. 8%
E. 2%
94. If sum of investment of A in both schemes and total profit obtained by A from both scheme is invested at compound interest at the rate of 20% p.a. then find the total compound interest obtained in 2 yr
A. 106240
B. 108240
C. 102208
D. 123480
E. 106500
95. What is the average of profit attained by A from scheme S₁ and profit of C obtained from scheme S₂.
A. 43000
B. 41000
C. 54000
D. 56000
E. 47000

96. What is the ratio of total profit obtained by B and profit obtained by C from scheme S1
A. 23: 47 B. 54: 47
C. 36: 43 D. 23: 50
E. 27: 50
97. What is the probability of forming word from the letters of word "IMPEACH" such that all vowels come together?
A. $\frac{1}{7}$ B. $\frac{4}{7}$
C. $\frac{1}{7}$ D. $\frac{4}{35}$
E. $\frac{13}{35}$
98. Sum of A's and B's age 6 years ago is 88. A's age 18 yrs ago is equal to B's age 6 years ago. Find the age of A two year hence?
A. 51 yrs B. 62 yrs
C. 22 yrs D. 58 yr
E. 18 yrs

99. In a box there are 6 blue ball, X red balls & 10 green balls. Probability of choosing one red ball from the given box is $\frac{1}{3}$, then find the sum of red and blue balls in the box?
A. 14 B. 11
C. 10 D. 17
E. 15
100. Train A of length 120 m can cross a platform of length 240m in 18 second the ratio of speed train A and Train B is 4: 5. The find the length of train B if train B can cross a pole in 12 seconds.
A. 300m B. 330m
C. 310m D. 370m
E. 340m
